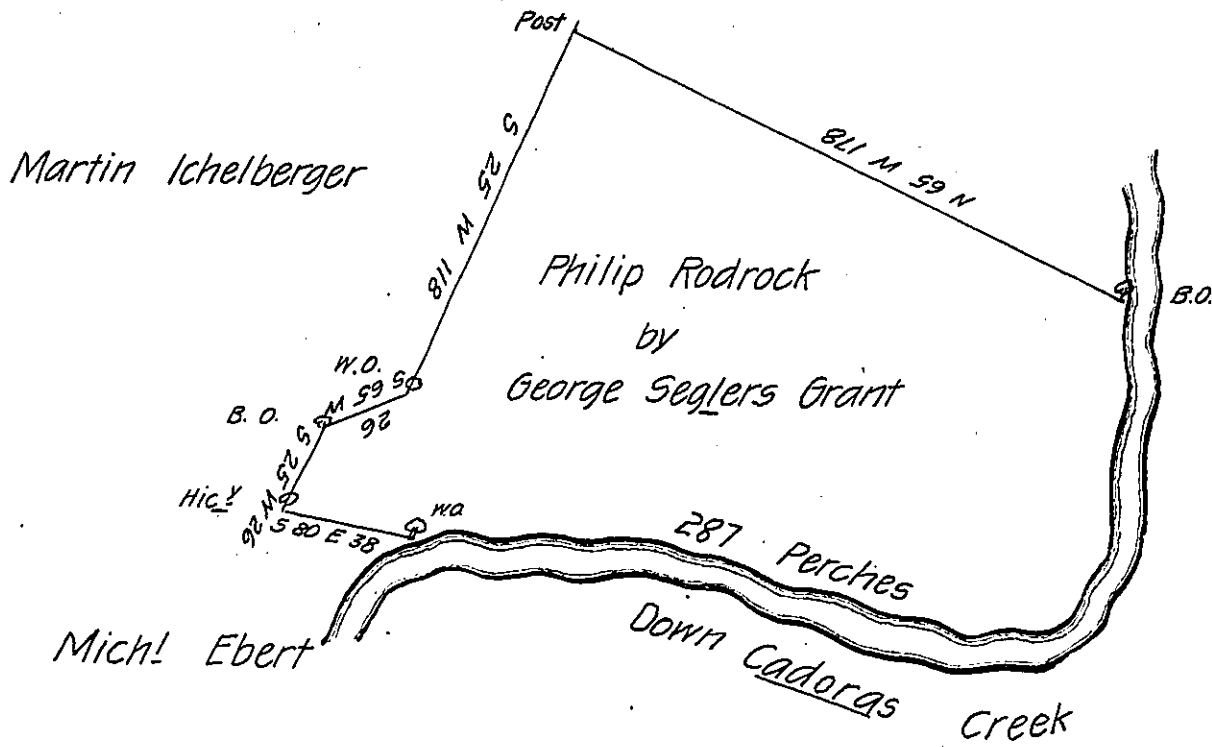


Men: Shultz



A Draught of a Tract of Land situate on Cadoras Creek on the West Side Sasquehanna - in Manchester Township York County, but formerly Lancaster County Containing One hundred & thirty nine Acres & the Allowance for Roads by Virtue of the Hon<sup>ble</sup> Proprietaries Grant or Licence bearing date the 29<sup>th</sup> of October 1736 Survey'd to George Segeler the 28<sup>th</sup> October 1746.

By

Tho. Cookson D.S.

To Nicholas Scull Esq<sup>r</sup>

Surv<sup>r</sup> Gen<sup>l</sup>

IN TESTIMONY that the above is a copy of the original remaining on file in the Department of Internal Affairs of Pennsylvania, made conformably to an Act of Assembly approved the 16th day of February, 1833, I have hereunto set my Hand and caused the Seal of said Department to be affixed at Harrisburg, this first day of August 1906

*Loac R. Brown*  
Secretary of Internal Affairs.